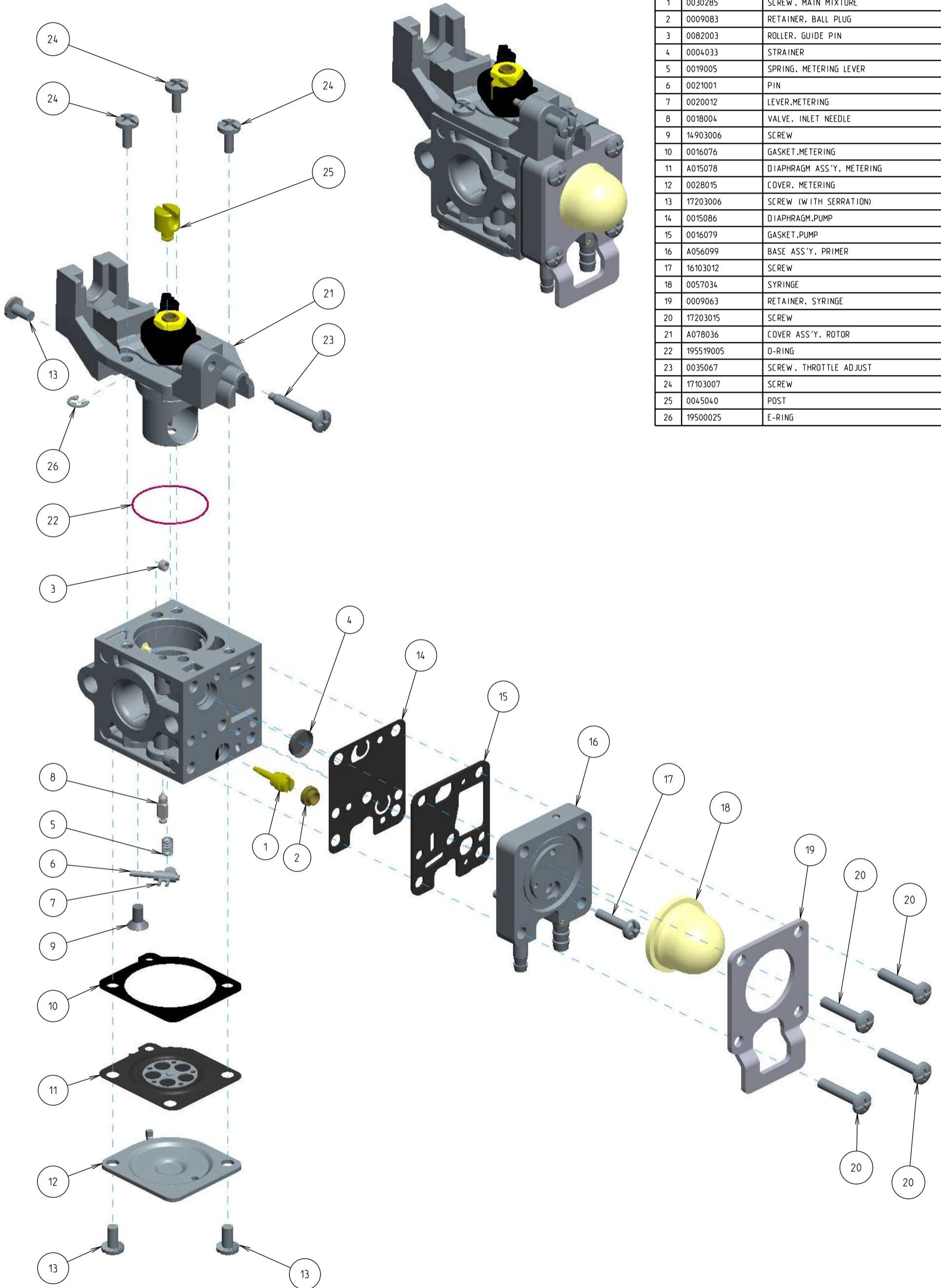


# Z011-120-0614-A



| ITEM | ZAMA PART NR.   | DESCRIPTION                           |
|------|-----------------|---------------------------------------|
|      | Z011-120-0614-A | CARBURETOR ASSEMBLY                   |
|      | RB-184          | REBUILD KIT (3.4.5.6.7.8.10.11.14.15) |
|      | GND-106         | GASKET & DIAPHRAGM KIT (10.11.14.15)  |
| 1    | 0030285         | SCREW, MAIN MIXTURE                   |
| 2    | 0009083         | RETAINER, BALL PLUG                   |
| 3    | 0082003         | ROLLER, GUIDE PIN                     |
| 4    | 0004033         | STRAINER                              |
| 5    | 0019005         | SPRING, METERING LEVER                |
| 6    | 0021001         | PIN                                   |
| 7    | 0020012         | LEVER, METERING                       |
| 8    | 0018004         | VALVE, INLET NEEDLE                   |
| 9    | 14903006        | SCREW                                 |
| 10   | 0016076         | GASKET, METERING                      |
| 11   | A015078         | DIAPHRAGM ASS'Y, METERING             |
| 12   | 0028015         | COVER, METERING                       |
| 13   | 17203006        | SCREW (WITH SERRATION)                |
| 14   | 0015086         | DIAPHRAGM, PUMP                       |
| 15   | 0016079         | GASKET, PUMP                          |
| 16   | A056099         | BASE ASS'Y, PRIMER                    |
| 17   | 16103012        | SCREW                                 |
| 18   | 0057034         | SYRINGE                               |
| 19   | 0009063         | RETAINER, SYRINGE                     |
| 20   | 17203015        | SCREW                                 |
| 21   | A078036         | COVER ASS'Y, ROTOR                    |
| 22   | 195519005       | O-RING                                |
| 23   | 0035067         | SCREW, THROTTLE ADJUST                |
| 24   | 17103007        | SCREW                                 |
| 25   | 0045040         | POST                                  |
| 26   | 19500025        | E-RING                                |