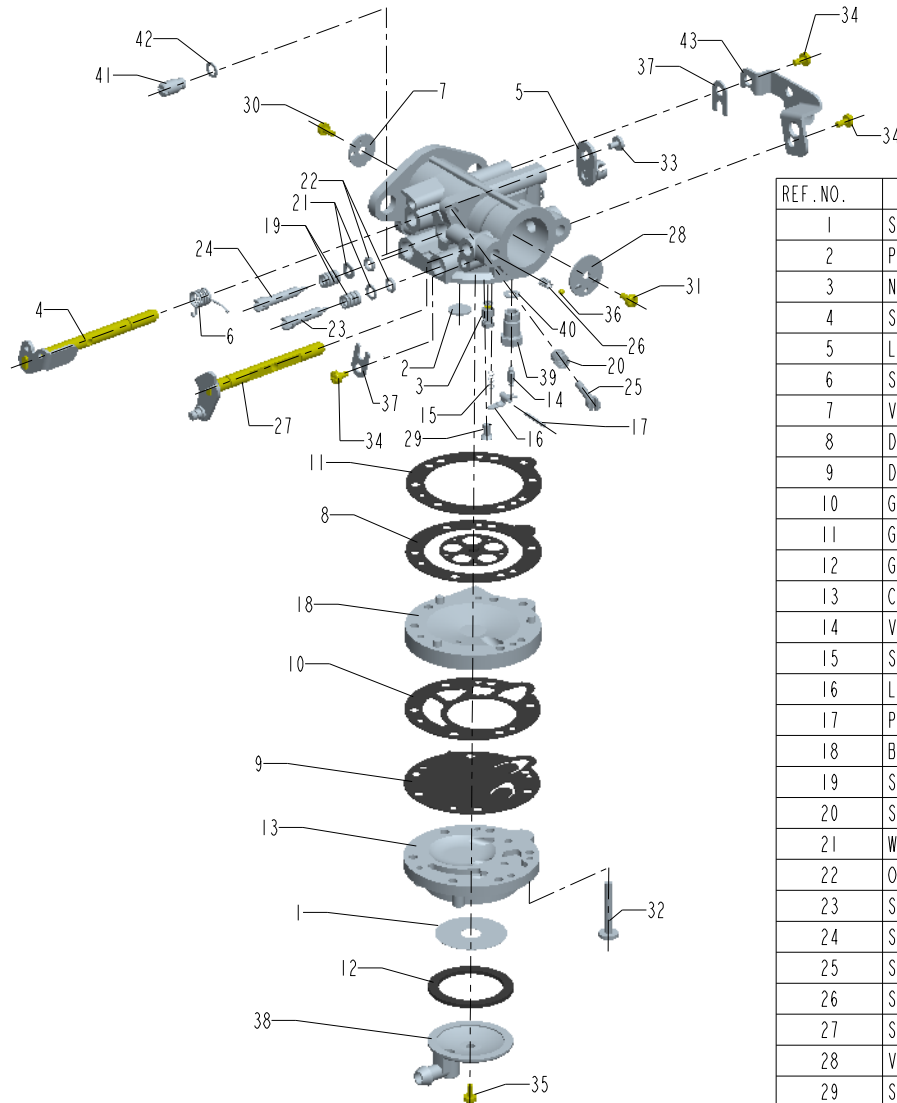


# LA/LB TYPE

\* THIS ILLUSTRATION DOES NOT REPRESENT EVERY MODEL. THIS IS INTENDED FOR A GENERIC REFERENCE ONLY.



REF. NO.	PART NAME
1	STRAINER
2	PLUG, WELCH
3	NOZZLE ASSEMBLY, CHECK VALVE
4	SHAFT ASSEMBLY , THROTTLE
5	LEVER ASSEMBLY, THROTTLE
6	SPRING, THROTTLE RETURN
7	VALVE, THROTTLE
8	DIAPHRAGM ASSEMBLY, METERING
9	DIAPHRAGM, PUMP
10	GASKET, PUMP
11	GASKET, METERING CHAMBER
12	GASKET, STRAINER
13	COVER, PUMP
14	VALVE, INLET NEEDLE
15	SPRING, METERING LEVER
16	LEVER, METERING
17	PIN
18	BODY, PUMP
19	SPRING, ADJUST SCREW
20	SPRING, ADJUST SCREW
21	WASHER (L.H. NEEDLE)
22	O-RING (L.H. NEEDLE)
23	SCREW, MAIN MIXTURE
24	SCREW, IDLE MIXTURE
25	SCREW, THROTTLE ADJUST
26	SPRING, FRICTION
27	SHAFT ASSEMBLY, CHOKE
28	VALVE, CHOKE
29	SCREW, (PIN)
30	SCREW (THROTTLE VALVE)
31	SCREW (CHOKE VALVE)
32	SCREW (PUMP COVER )
33	SCREW (THROTTLE, CHOKE LEVER )
34	SCREW
35	SCREW (PLASTIC COVER )
36	BALL, STEEL
37	RETAINER, SHAFT
38	COVER, PLASTIC
39	SEAT, INLET
40	WASHER (SEAT)
41	GOVERNOR ASSEMBLY
42	WASHER (GOVERNOR)
43	HOLDER, WIRE