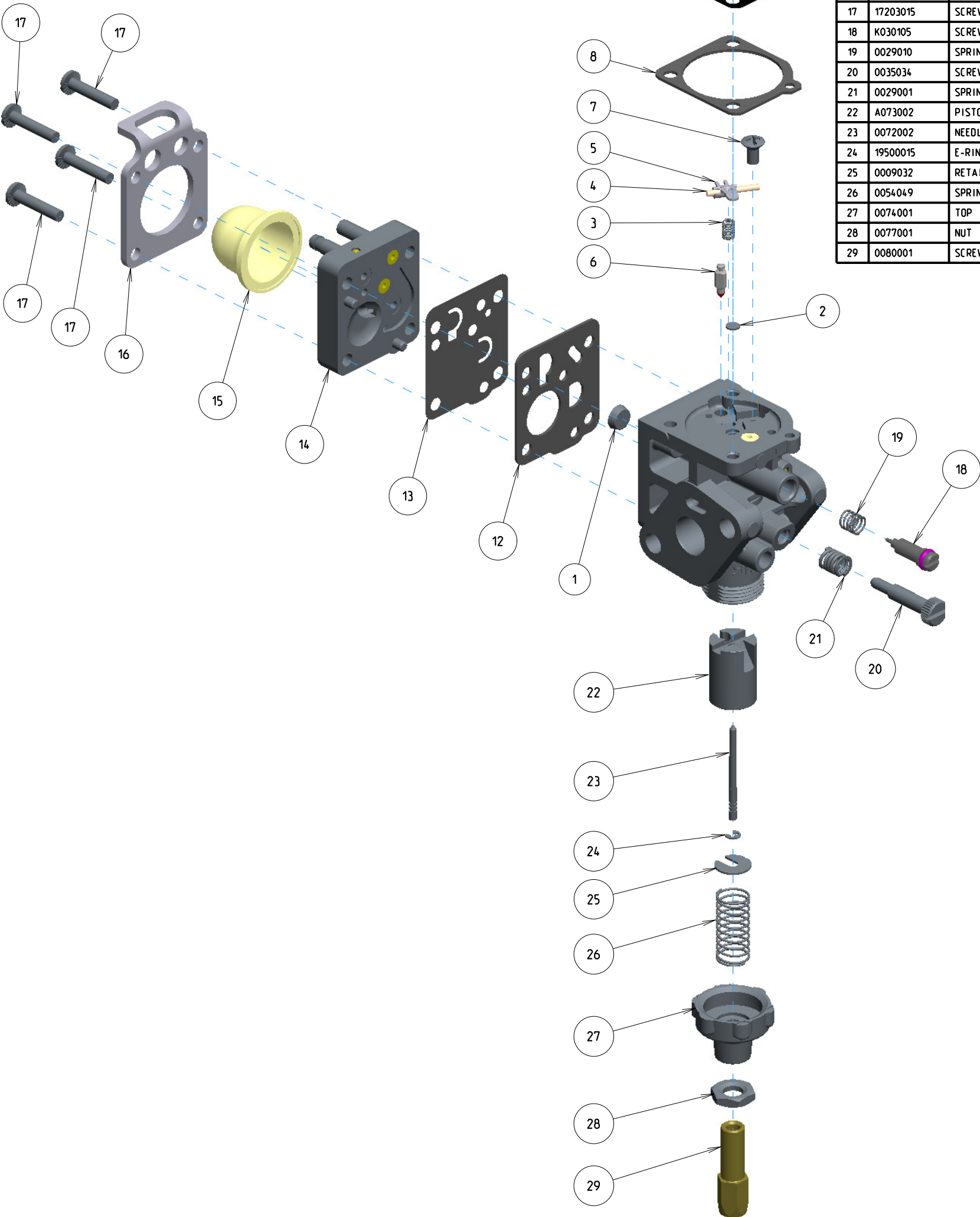


AA-K56



| ITEM | ZAMA PART NR. | DESCRIPTION |
|------|---------------|-------------------------------------|
| | AA-K56 | CARBURETOR ASSEMBLY |
| | RB-211 | REBUILD KIT (1.2.3.4.5.6.8.9.12.13) |
| | GND-124 | GASKET & DIAPHRAGM KIT (8.9.12.13) |
| | 0051028 | BOOTS |
| 1 | 0004004 | STRAINER |
| 2 | 0005009 | PLUG.WELCH |
| 3 | 0019014 | SPRING.METERING LEVER |
| 4 | 0021001 | PIN |
| 5 | 0020012 | LEVER.METERING |
| 6 | 0018004 | VALVE. INLET NEEDLE |
| 7 | 14803006 | SCREW (METERING LEVER PIN) |
| 8 | 0016019 | GASKET.METERING CHAMBER |
| 9 | A015078 | DIAPHRAGM ASS'Y. METERING |
| 10 | 0028032 | COVER. METERING CHAMBER |
| 11 | 17203006 | SCREW (WITH SERRATION) |
| 12 | 0016048 | GASKET. PUMP |
| 13 | 0015058 | DIAPHRAGM.PUMP |
| 14 | A056053 | BASE ASS'Y. PRIMER |
| 15 | 0057035 | SYRINGE |
| 16 | 0009058 | RETAINER.SYRINGE |
| 17 | 17203015 | SCREW |
| 18 | K030105 | SCREW KIT. MAIN MIXTURE |
| 19 | 0029010 | SPRING. ADJUST SCREW |
| 20 | 0035034 | SCREW. THROTTLE ADJUST(TAS) |
| 21 | 0029001 | SPRING. ADJUST SCREW |
| 22 | A073002 | PISTON ASS'Y |
| 23 | 0072002 | NEEDLE.JET |
| 24 | 19500015 | E-RING |
| 25 | 0009032 | RETAINER. CLIP |
| 26 | 0054049 | SPRING |
| 27 | 0074001 | TOP |
| 28 | 0077001 | NUT |
| 29 | 0080001 | SCREW. WIRE ADJUST |