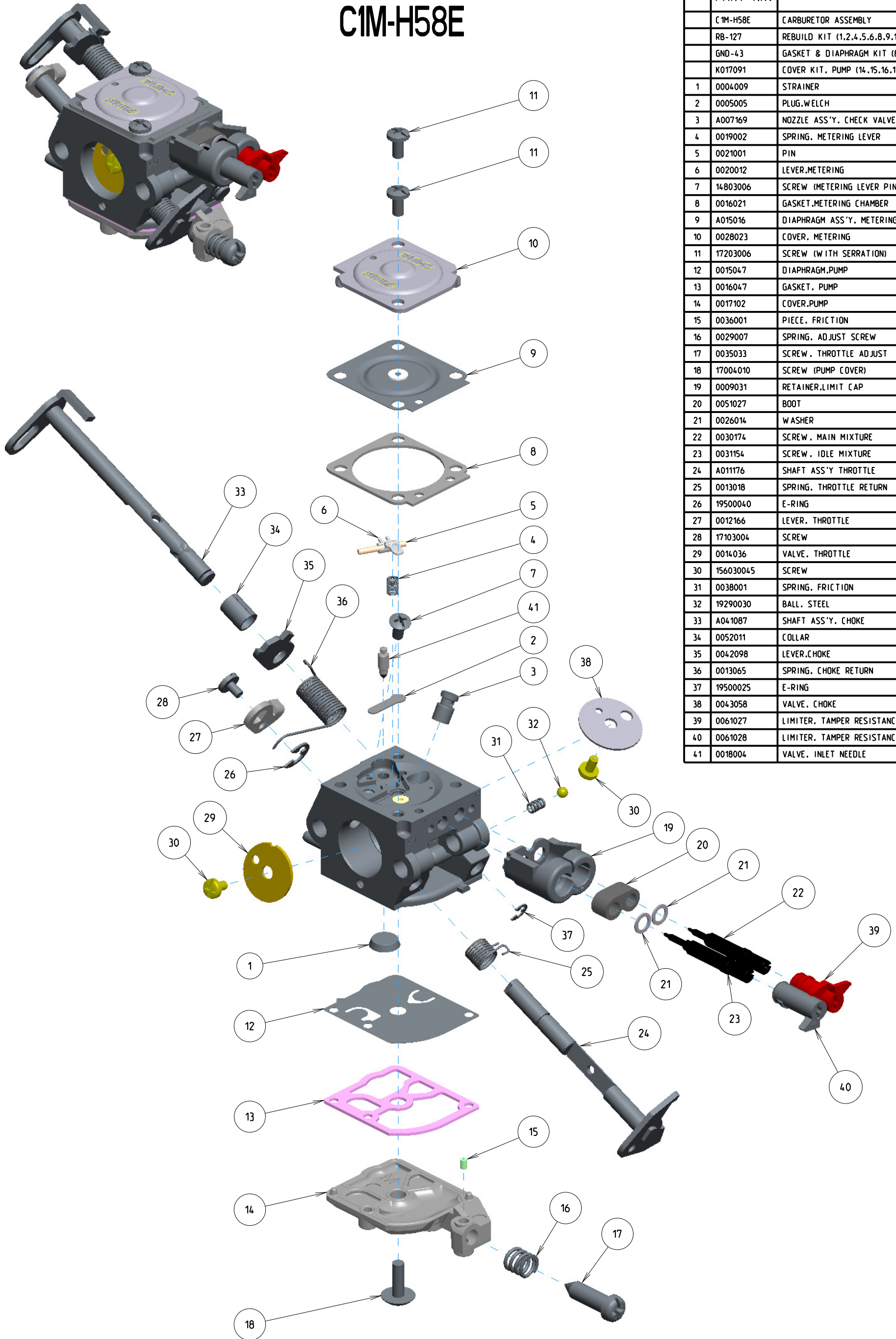


# C1M-H58E



ITEM	ZAMA PART NR.	DESCRIPTION
	C1M-H58E	CARBURETOR ASSEMBLY
	RB-127	REBUILD KIT (1,2,4,5,6,8,9,12,13,41)
	GND-43	GASKET & DIAPHRAGM KIT (8,9,12,13)
	K017091	COVER KIT, PUMP (14,15,16,17)
1	0004009	STRAINER
2	0005005	PLUG,WELCH
3	A007169	NOZZLE ASS'Y, CHECK VALVE
4	0019002	SPRING, METERING LEVER
5	0021001	PIN
6	0020012	LEVER,METERING
7	14803006	SCREW (METERING LEVER PIN)
8	0016021	GASKET,METERING CHAMBER
9	A015016	DIAPHRAGM ASS'Y, METERING
10	0028023	COVER, METERING
11	17203006	SCREW (WITH SERRATION)
12	0015047	DIAPHRAGM,PUMP
13	0016047	GASKET, PUMP
14	0017102	COVER,PUMP
15	0036001	PIECE, FRICTION
16	0029007	SPRING, ADJUST SCREW
17	0035033	SCREW, THROTTLE ADJUST
18	17004010	SCREW (PUMP COVER)
19	0009031	RETAINER,LIMIT CAP
20	0051027	BOOT
21	0026014	WASHER
22	0030174	SCREW, MAIN MIXTURE
23	0031154	SCREW, IDLE MIXTURE
24	A011176	SHAFT ASS'Y THROTTLE
25	0013018	SPRING, THROTTLE RETURN
26	19500040	E-RING
27	0012166	LEVER, THROTTLE
28	17103004	SCREW
29	0014036	VALVE, THROTTLE
30	156030045	SCREW
31	0038001	SPRING, FRICTION
32	19290030	BALL, STEEL
33	A041087	SHAFT ASS'Y, CHOKE
34	0052011	COLLAR
35	0042098	LEVER,CHOKE
36	0013065	SPRING, CHOKE RETURN
37	19500025	E-RING
38	0043058	VALVE, CHOKE
39	0061027	LIMITER, TAMPER RESISTANCE
40	0061028	LIMITER, TAMPER RESISTANCE
41	0018004	VALVE, INLET NEEDLE