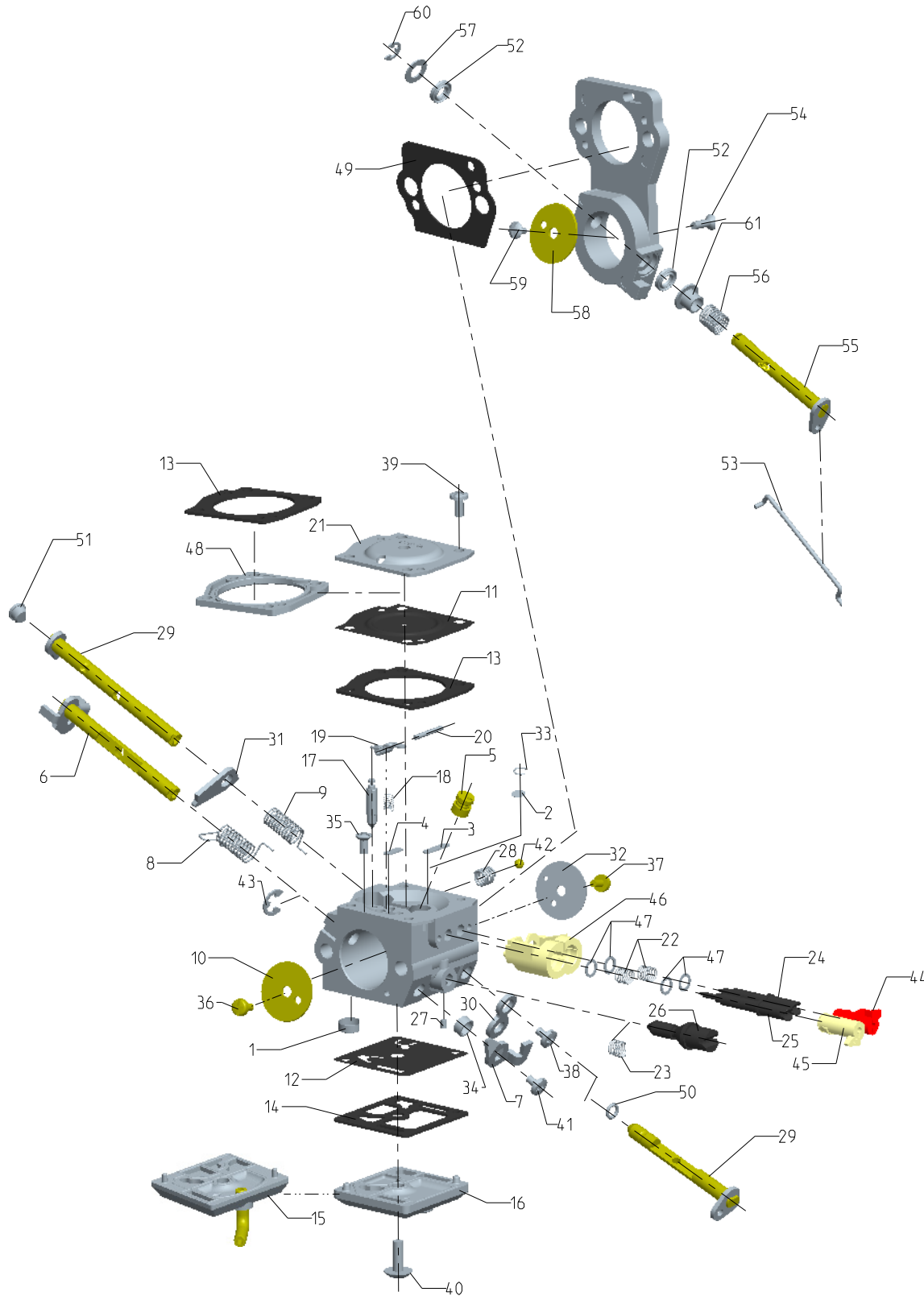


\* THIS ILLUSTRATION DOES NOT REPRESENT EVERY MODEL. THIS IS INTENDED FOR A GENERIC REFERENCE ONLY.

# C3 TYPE



| REF.NO | PART NAME                 |
|--------|---------------------------|
| 1      | STRAINER                  |
| 2      | STRAINER                  |
| 3      | PLUG, WELCH               |
| 4      | PLUG, WELCH               |
| 5      | NOZZLE ASS'Y, CHECK VALVE |
| 6      | SHAFT ASS'Y, THROTTLE     |
| 7      | LEVER, THROTTLE           |
| 8      | SPRING, THROTTLE RETURN   |
| 9      | SPRING, CHOKE RETURN      |
| 10     | VALVE, THROTTLE           |
| 11     | DIAPHRAGM ASS'Y, METERING |
| 12     | DIAPHRAGM, PUMP           |
| 13     | GASKET, METERING CHAMBER  |
| 14     | GASKET, PUMP              |
| 15     | COVER ASS'Y, PUMP         |
| 16     | COVER, PUMP               |
| 17     | VALVE, INLET NEEDLE       |
| 18     | SPRING, METERING LEVER    |
| 19     | LEVER, METERING           |
| 20     | PIN                       |
| 21     | COVER, METERING CHAMBER   |
| 22     | SPRING, ADJUST SCREW      |
| 23     | SPRING, ADJUST SCREW      |
| 24     | SCREW, MAIN MIXTURE       |
| 25     | SCREW, IDLE MIXTURE       |
| 26     | SCREW, THROTTLE ADJUST    |
| 27     | PIECE, FRICTION           |
| 28     | SPRING, FRICTION          |
| 29     | SHAFT ASS'Y, CHOKE        |
| 30     | LEVER, CHOKE              |
| 31     | LEVER, CHOKE              |
| 32     | VALVE, CHOKE              |
| 33     | RING, WIRE                |
| 34     | COLLAR                    |
| 35     | SCREW (PIN)               |
| 36     | SCREW (THROTTLE VALVE)    |
| 37     | SCREW (CHOKE VALVE)       |
| 38     | SCREW (CHOKE LEVER)       |
| 39     | SCREW (METERING COVER)    |
| 40     | SCREW (PUMP COVER)        |
| 41     | SCREW (THROTTLE LEVER)    |
| 42     | BALL, STEEL               |
| 43     | E-RING (THROTTLE SHAFT)   |
| 44     | LIMITER (H)               |
| 45     | LIMITER (L)               |
| 46     | RETAINER (LIMITER)        |
| 47     | WASHER (LIMITER)          |
| 48     | COVER, COMPENSATOR        |
| 49     | GASKET (AIR HEAD)         |
| 50     | O-RING                    |
| 51     | PLUG (CHOKE SHAFT)        |
| 52     | QUAD RING                 |
| 53     | ROD LINKAGE (AIR HEAD)    |
| 54     | SCREW (BODY AIR HEAD)     |
| 55     | SHAFT ASS'Y (AIR HEAD)    |
| 56     | SPRING (AIR HEAD ,RETURN) |
| 57     | WASHER                    |
| 58     | VALVE (AIR HEAD)          |
| 59     | SCREW (VALVE, AIR HEAD)   |
| 60     | E-RING (SHAFT, AIR HEAD)  |
| 61     | COLLAR (SHAFT, AIR HEAD)  |